

# ZENNER IoT gateway smart

for implementation of IoT applications in Smart Home

ZENNER IoT gateways use high-performance LoRaWAN® technology, whose excellent building penetration and long-range network coverage ensure the connectivity of IoT sensors even under challenging environmental and installation conditions.

The IoT gateway smart is ideally suited to making LoRaWAN® connectivity available within a building in a simple, swift and cost-efficient manner. As such, Smart Home applications can be implemented without a great deal of time spent on setup and assembly. The ex works preconfigured gateway automatically connects to B.One middleware once the WLAN connection has been established. You can then view the operating status (online/offline) in the B.One middleware.

The device can be used for a variety of IoT applications and is an integral part of the ZENNER IoT range of solutions.

It connects LoRaWAN® terminal devices (air quality sensors, CO2 detectors, door and window contact sensors, smoke detectors etc.) with B.One middleware.



The ZENNER IoT gateway smart is able to integrate a wide range of end devices into the LoRaWAN® wireless system. The data is stored in our DIN EN ISO / IEC 27001 certified data centre in Germany.

## Performance characteristics at a glance

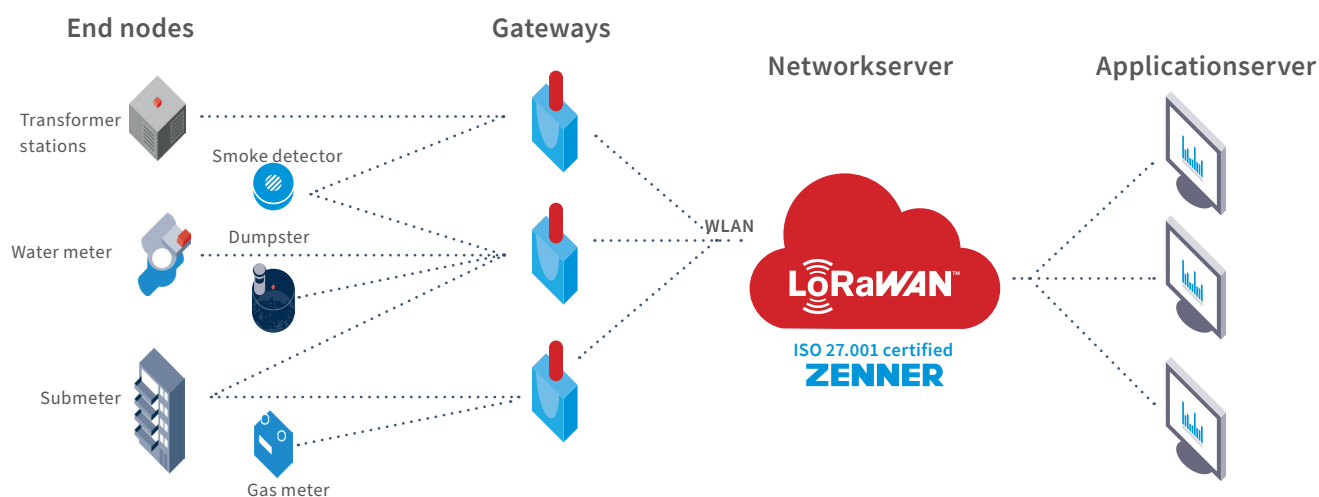
- Suitable for LoRaWAN® IoT solutions from ZENNER and network operation of Minol ZENNER Connect
- Bidirectional LoRaWAN® radio communication
- Encrypted end-to-end data transmission (AES 128)
- High Data protection: No storage of data / meter readings on the gateway
- Plug & Play - Simple integration through pre-configured software
- Fields of application in Germany
- Use as a mobile LoRa hotspot by connecting to a smartphone Wi-Fi hotspot and the USB-C port for power supply (also possible with a powerbank)

## Applications

- Smart Home / Smart Building / Smart School
- Submetering
- Indoor air quality measurement (e.g. CO<sub>2</sub>)

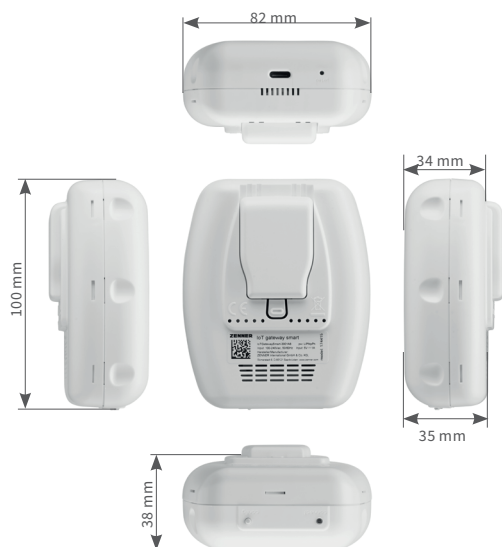
# ZENNER IoT gateway smart

## Architecture



### Technical data

Backhaul	WLAN 802.11 b/g/n, Frequency: 2.4 GHz, security: WPA/WPA2
# LoRa channel	8 channels, receiver sensitivity: -140 dBm
TX power	Up to +20 dBm
Frequency	EU-868 (862 – 870 MHz)
Power supply	230 V socket (Euro plug) / USB type C (900 mA)
Antennas	Internal: 1 x LoRa, 1 x Wi-Fi
Protection class	IP40
Housing	Plastic with flame retardancy according to UL94-2013 edition 9-2019, class.: V-0
Operating temperature	0 °C to +40 °C
Storage temperature	-40 °C to +70 °C
LED	Wi-Fi status
Installation	Socket
Standards	CE / RoHS
Dimensions [L x B x H]	100 x 82 x 38 mm
Weight	160 g



## ZENNER International GmbH & Co. KG

Heinrich-Barth-Straße 29 | 66115 Saarbrücken | Germany

Telefon +49 681 99 676-30  
Telefax +49 681 99 676-3100

E-Mail  
Internet

info@zenner.com  
www.zenner.com