

1) FM432 models for electricity meters in Germany

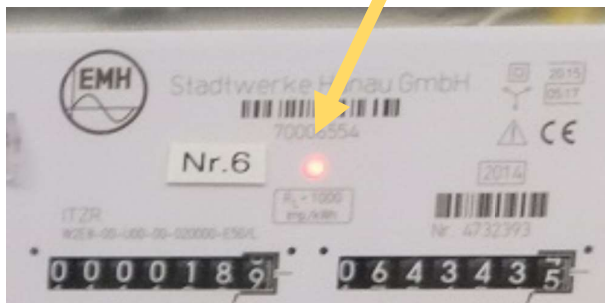


The **FM432e** model is compliant with :

- * Ferrari meter (Mark detection on the wheel)
- * Digital Meter (**Flash Led** detection in front of meter)

The **FM432ir** model is compliant with :

- * Ferrari meter (Mark detection on the wheel)
- * Digital Meter (with **Front IR interface**, uni-directional, ,9600 Baud, protocol **SML**)



2) List of domestic electricity meters tested with FM432ir

Meter supplier	Models
EMH	ED100L, eBZD, eHZ, ED300L
DZG	WS7412, DWS7412
EFR	SGM-C4, SGM-C2
EBZ	DD3
ISKRA	MT175, MT681, MT631
ITRON	Openway 3.Hz

2.1) Pictures of EMH electricity meters

ED100L



eBZD



eHZ



eHZ-K



ED300L



eHZ-P



2.2) Pictures of DZG electricity meters

WS7412



DWS7412



2.3) Pictures of EFR electricity meters

SGM-C4



SGM-C2



2.4) Pictures of EBZ electricity meters

DD3

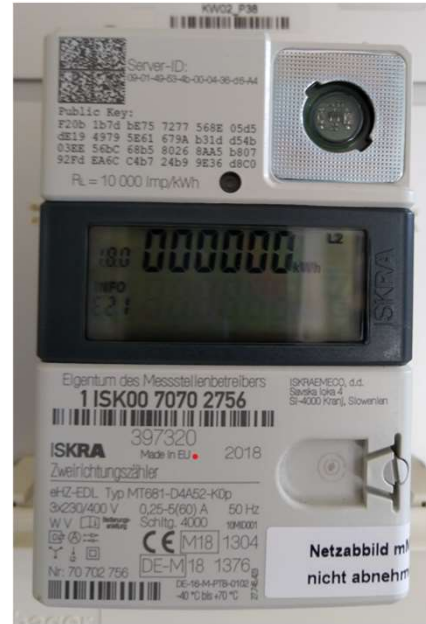


2.5) Pictures of ISKRA electricity meters

MT175



MT681



MT631



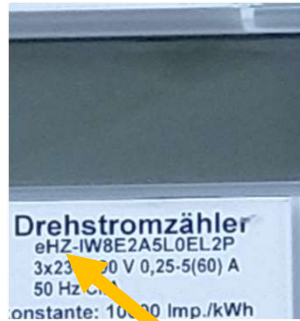
- Energierichtungen: A+ ; A-
- Tarifierung: 1.8.0 (1.8.1, 1.8.2) ; 2.8.0

2.6) Pictures of ITRON electricity meters

Openway 3.HZ



3) Reminder of the different meter releases



Meter Release	ex: HW	Type	Installation date
Ferraris		analog with Disk	before 1995
??		electronic with analog display	1995-2007
EHZ (Elektronischer Haushaltszähler)	EMH eHZ	electronic	2005-2010
eHz-EDL (EnergieDienstleistung)	Iskra MT681	electronic	2010-2017
mME (Moderne Messeinrichtung)	EFR SGM-C4	electronic : < 6000 Kwh year	2017-2032
BasisZähler	Iskra MT631	electronic with SMG (Smart Meter Gateway) : > 6000 Kwh	2017-2032

